

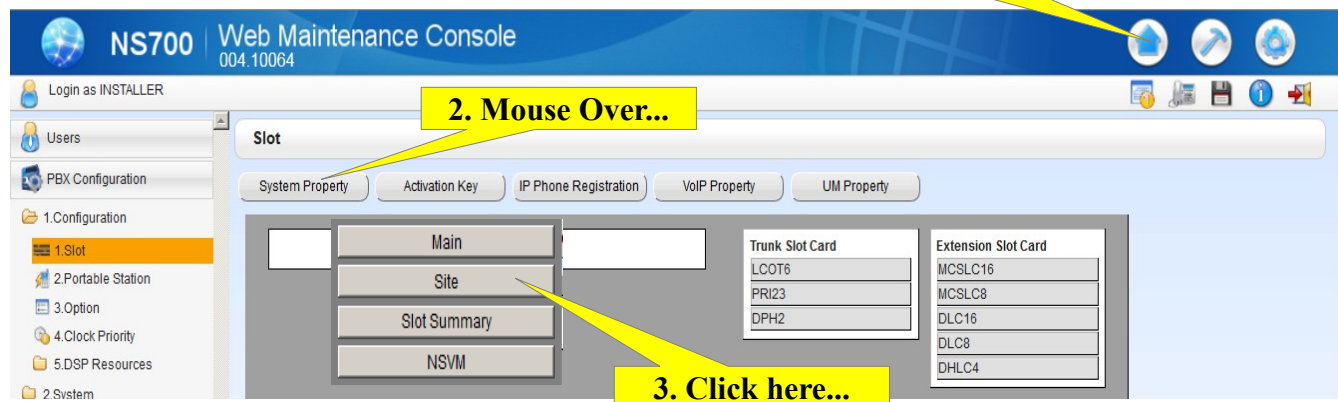
Panasonic KX-NS700

Remote NT Type Telephone Setup

Telquest Tech Support

Note: At the KSU location, you will need to "Open" these ports in the customers Network Router.
Ports: 2727 UDP, 32727 UDP, 9300 UDP, 39300 UDP and 31021 TCP to the LAN IP Address of the KSU.
 Also, Open Port 15060 UDP.
Port Range: 16000 to 16100 UDP to the IP Address of the **DSP Card -1**. See Page 5.

Connect to the KSU via a web browser: Then...



Next Screen:



Next Screen:

1. Click here...

Bottom of page

2. Set like this...

Same Screen:

1. Click here...

2. Mouse Over...

3. Click here...

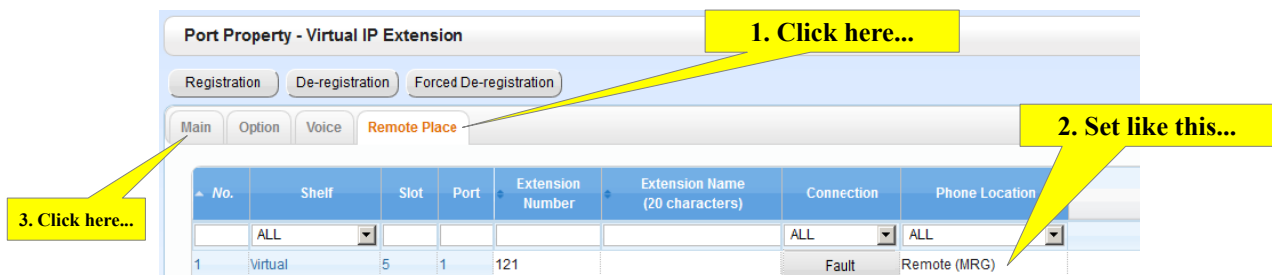
Next Screen:



Same Screen:

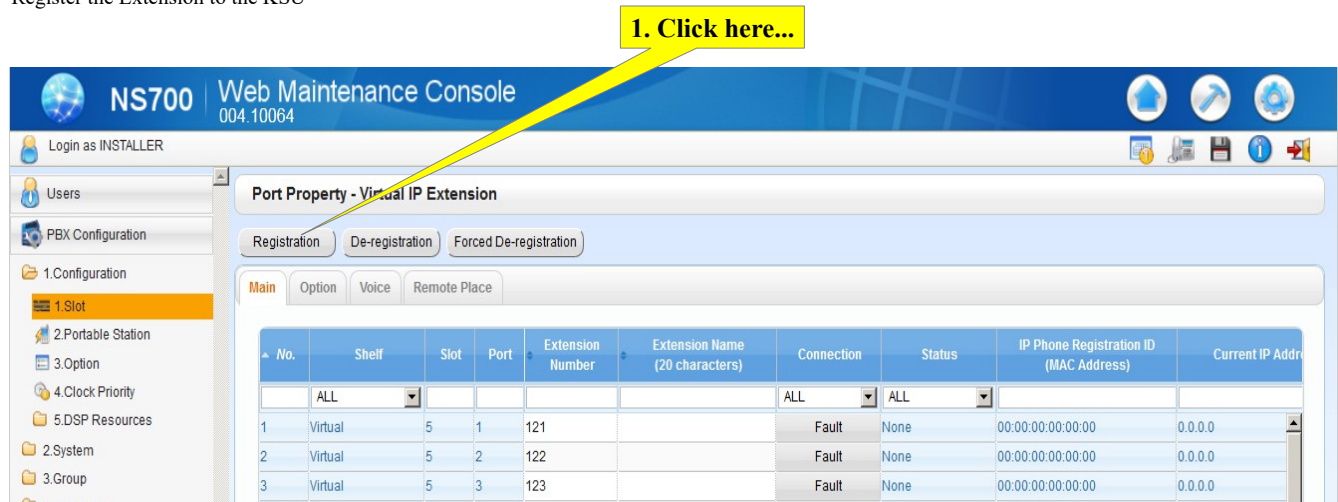


Next Screen:



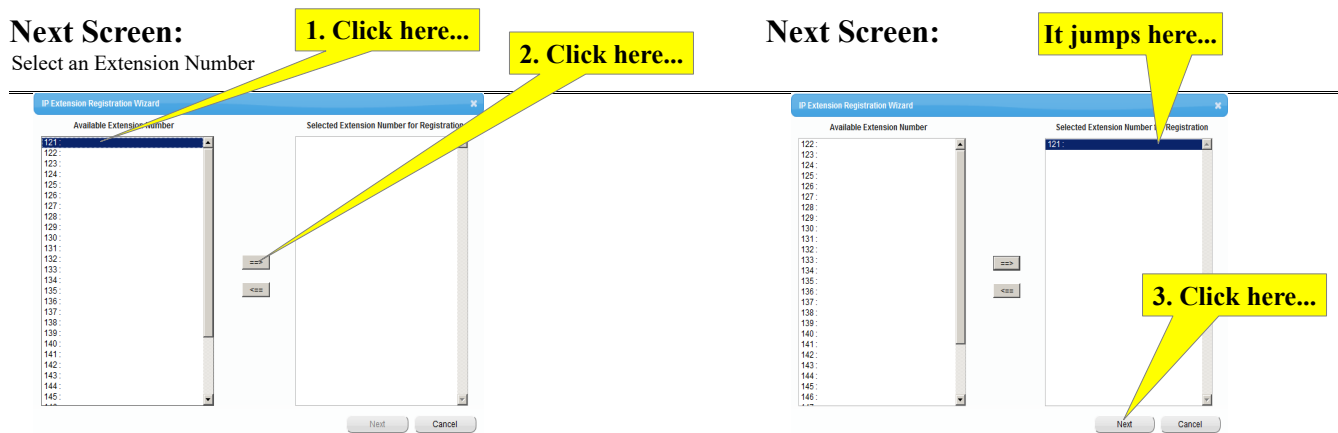
Next Screen:

Register the Extension to the KSU



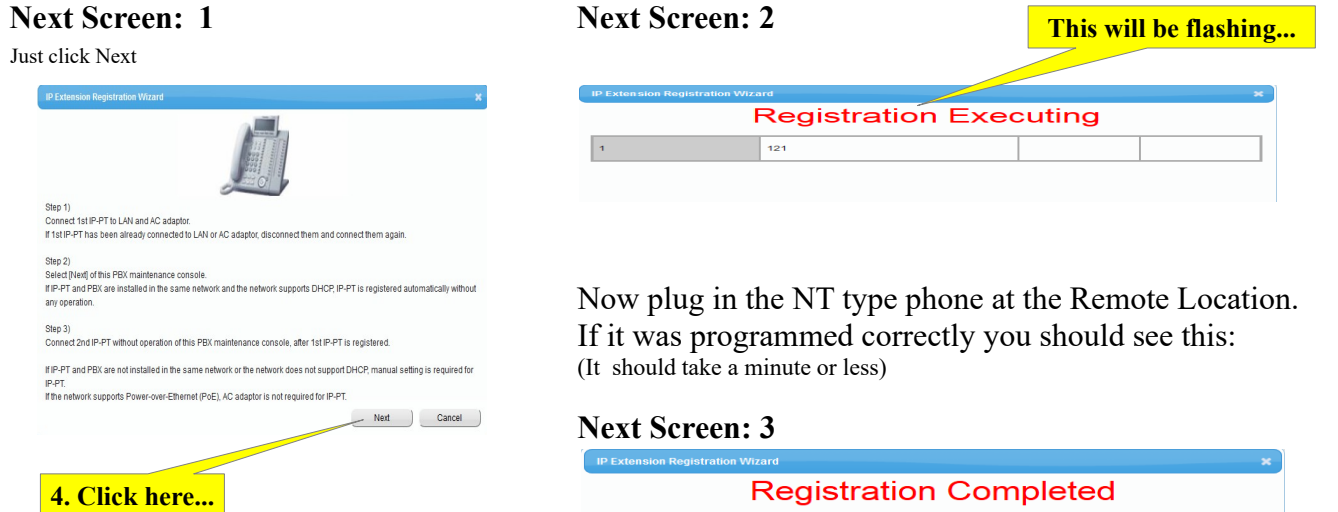
Next Screen:

Select an Extension Number



Next Screen: 1

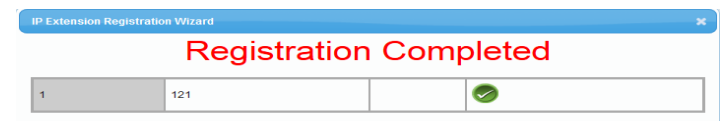
Just click Next



Next Screen: 2

Now plug in the NT type phone at the Remote Location.
If it was programmed correctly you should see this:
(It should take a minute or less)

Next Screen: 3



Setting the DSP -1 Card IP Address.

When you initialized the system, you set the LAN IP Address for the KSU and the DSP Cards.

The DSP Cards, via their IP Addresses, is where IP Voice Packets are sent and received.

I usually set each DSP Card to an address 1 higher than the KSU.

Example:

1. Click here...

2. Click here...

1. Click here...

KSU LAN IP Addr.

You need at least one DSP Card

DSP -1 LAN IP Addr.

DSP -2 LAN IP Addr.

Optional DSP Card

Programming the Remote KX-NT type phone

Connect the NT Type phone to the LAN at the Remote Location.
Power it on.

When you see **SETUP** in the LCD, press the button below it.

LCD will say: **=> Network**

Press **ENTER**

LCD will say:
DHCP Enable Disable
=> IP Address

Press the Navigation Ring and select **Enable** (this will allow the phone to get a Local LAN IP Address)

Press **ENTER**

LCD will say:
IP Address
---.---.---

Press **EXIT**
Press **Next**
Press **Next**
Press **EXIT**

Press the Navigation Ring and select **=> PBX**

Press **ENTER**

LCD will say: **=> PBX IP Address**

Press **ENTER**

LCD will say: **=> Primary PBX**

Press **ENTER**

LCD will say: **=> PBX IP Address?**

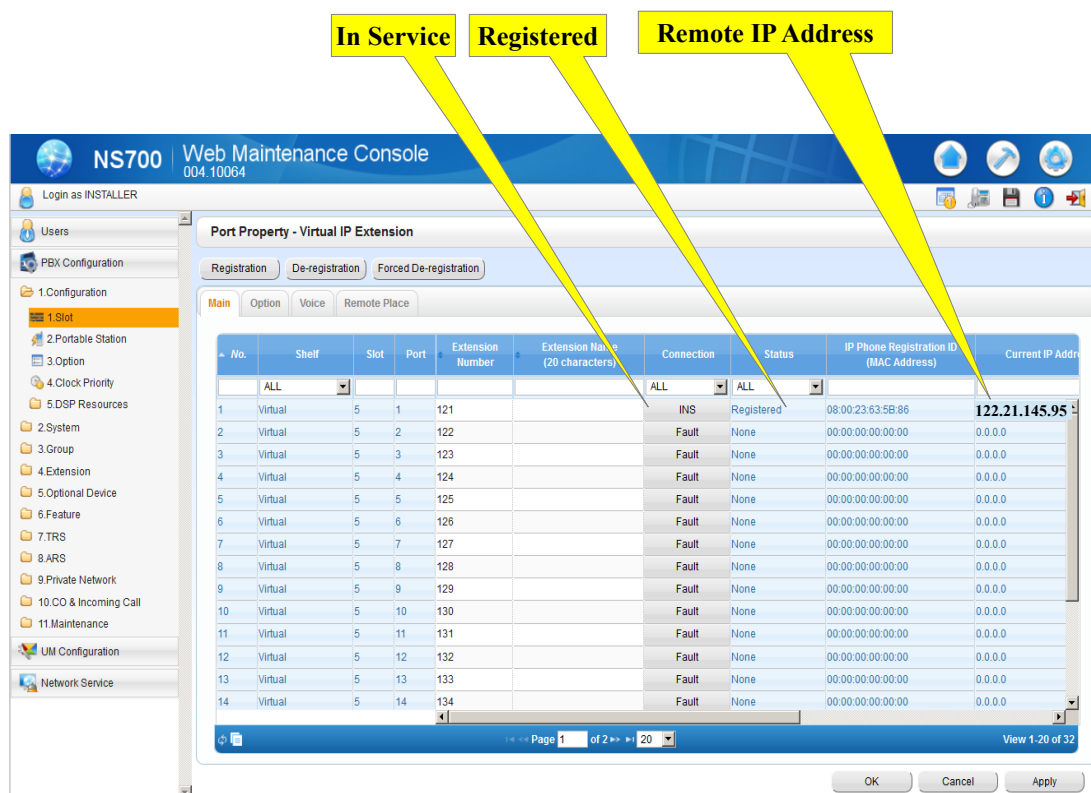
Now enter the PUBLIC IP ADDRESS of the router that the KSU is connected to.

Press **ENTER**

Press **Exit**
Press **Exit**
Press **STORE**

The phone will re-boot and should start working shortly.

This is what you will see when the phone is Registered to the KSU:



Notes:

When I was developing this Help Sheet I had to reboot my router (Netgear FVG318) when I made changes to its Port Forwarding area.

The router said the changes were made and accepted but they were not active.

This caused a lot of confusion and inaccurate tests.

So, if you do not get the results you expect, you may want to reboot or power cycle your router.

The NT phone at the the remote location does not need a Static IP Address on the LAN or WAN.

The KSU MUST have a Static Public (WAN) and Private (LAN) IP Address.

Ports 32727 UDP and 39300 UDP that are listed on Page 1 are for the NS-0154 IP Cell Station (Base). You do not need to Open them but it may be a good idea in case a Remote IP Cell Station is installed in the future.